

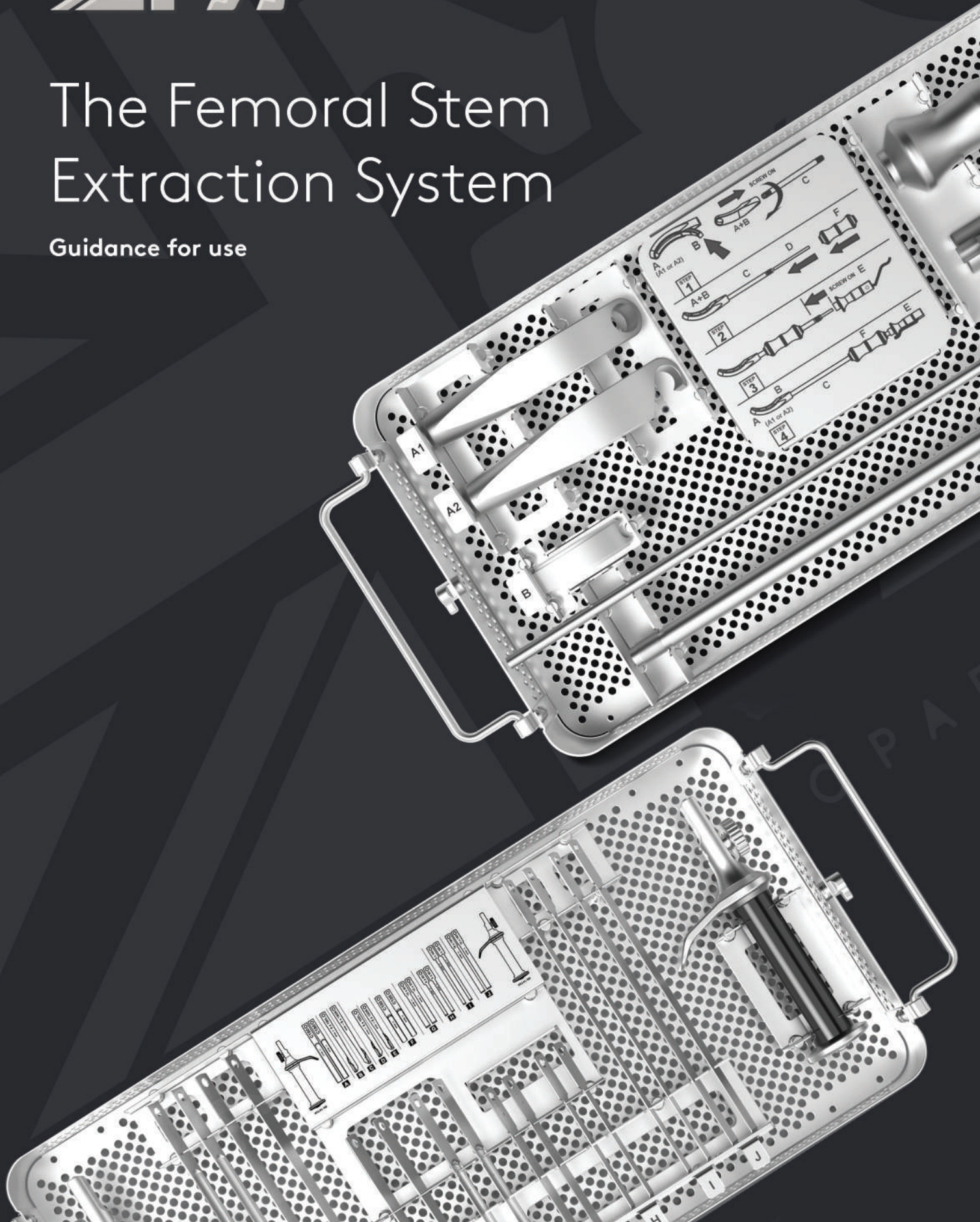
Heritage INSTRUMENTS®



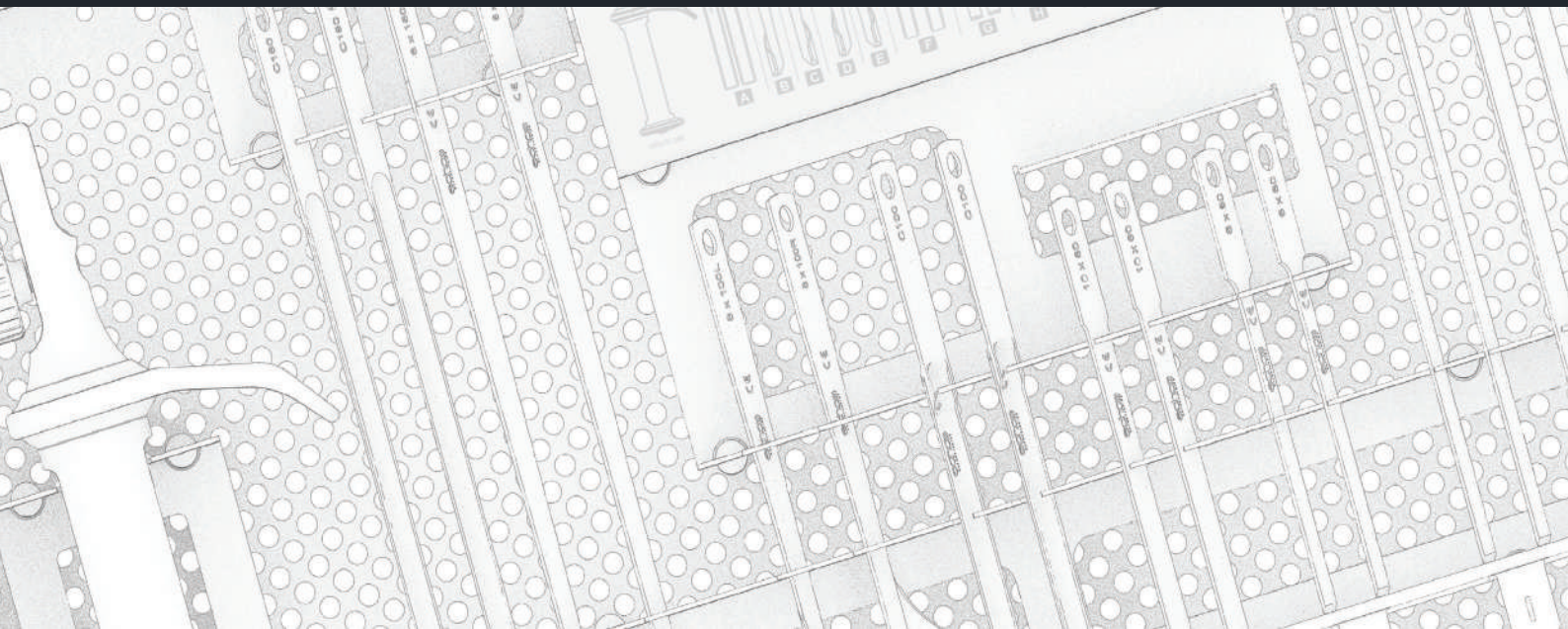
echo
ORTHOPAEDICS

The Femoral Stem Extraction System

Guidance for use



Femoral Stem Extraction System



Contents

Before and After Use	3
Flexible Chisel Tray	4
Slap Hammer Tray	5
Quick Reference User Guide	6
Set Contents	7

GENERAL INSTRUMENT CHECK LIST

Before and after each use ensure that:

- All Instruments are examined for damage
- The extractor shaft tubes slide freely over all extractor shafts
- The clamping and release mechanism on the chisel handle engages and locks onto all the chisels

Cleaning: Before and after each use:

- Clean all external and external threaded parts agitate with a soft brush if necessary.
- Check that all parts are clean and free of bone debris.
- Check that the internal and external surfaces, including extraction teeth, of the Extractor parts are clean and free of bone debris, agitate with a soft brush if necessary.

Do not use wire wool or abrasive materials – Contact Echo Orthopaedics for full reprocessing instructions.

Flexible Chisel Tray

Check condition of all Chisels

Remove any Chisels that have become distorted or blunt during use.

Replace with new Chisels. Check the working condition of the instruments in this System to assess condition and replace if necessary.

Slap Hammer Tray

Assemble the Slap Hammer as on page 6 and on the instrument tray base.

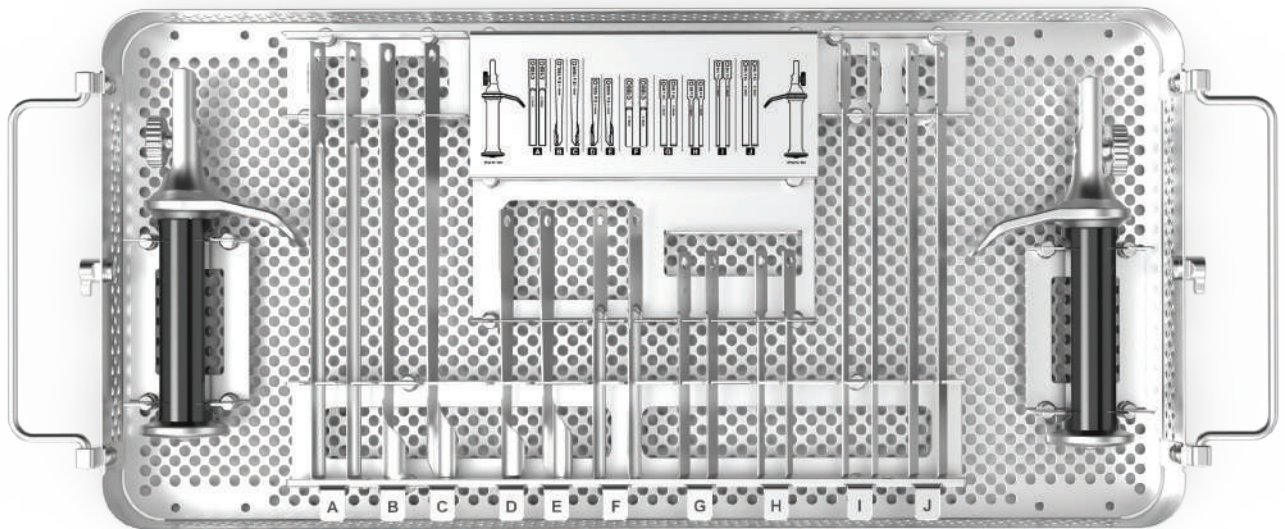
Check working parts to assess the instrument's performance prior to use.

Flexible Chisel Tray



Femoral Stem Extraction System Flexible Chisel Tray

Tray Layout



Chisel and Handle Assembled

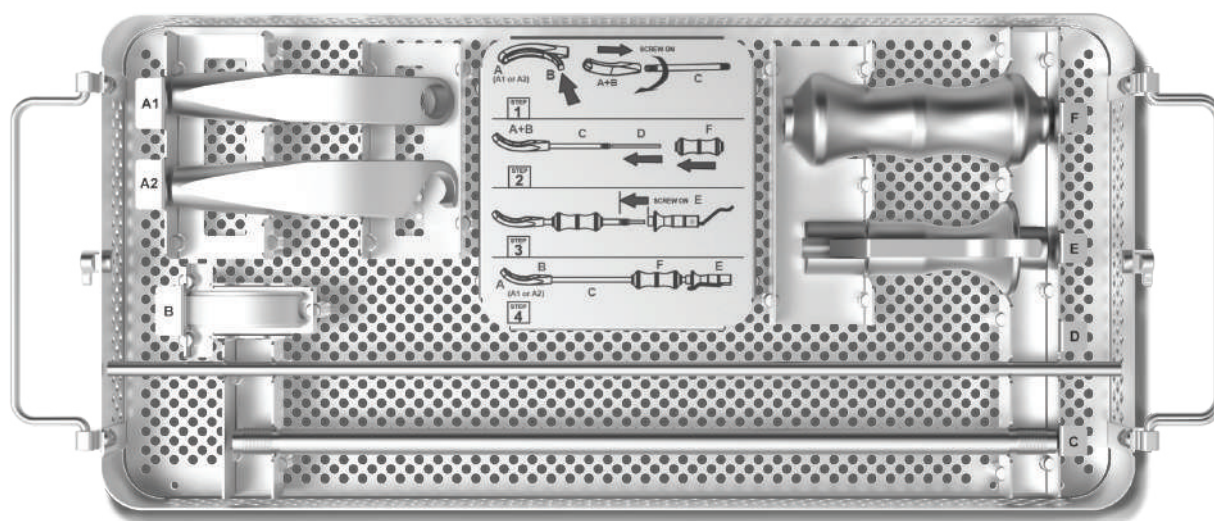


Slap Hammer Tray

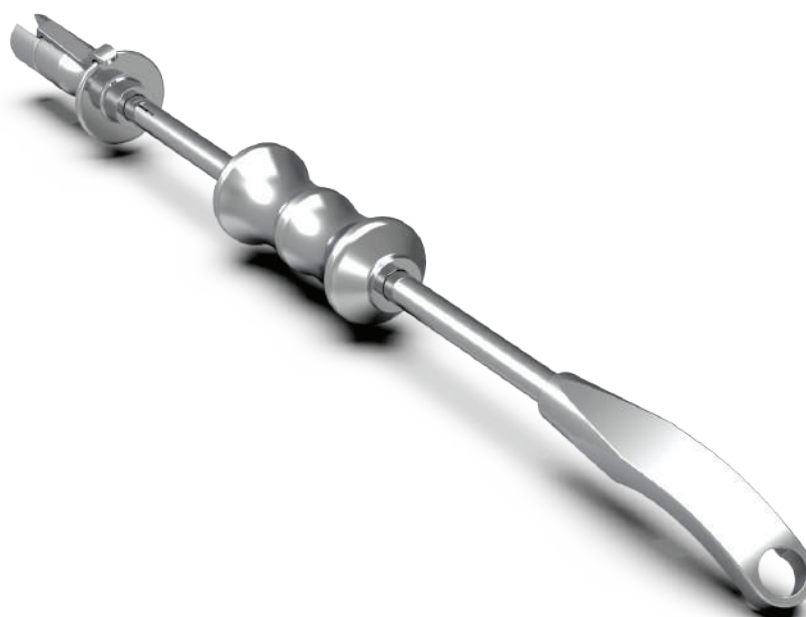


Femoral Stem Extraction System Slap Hammer Tray

Tray Layout

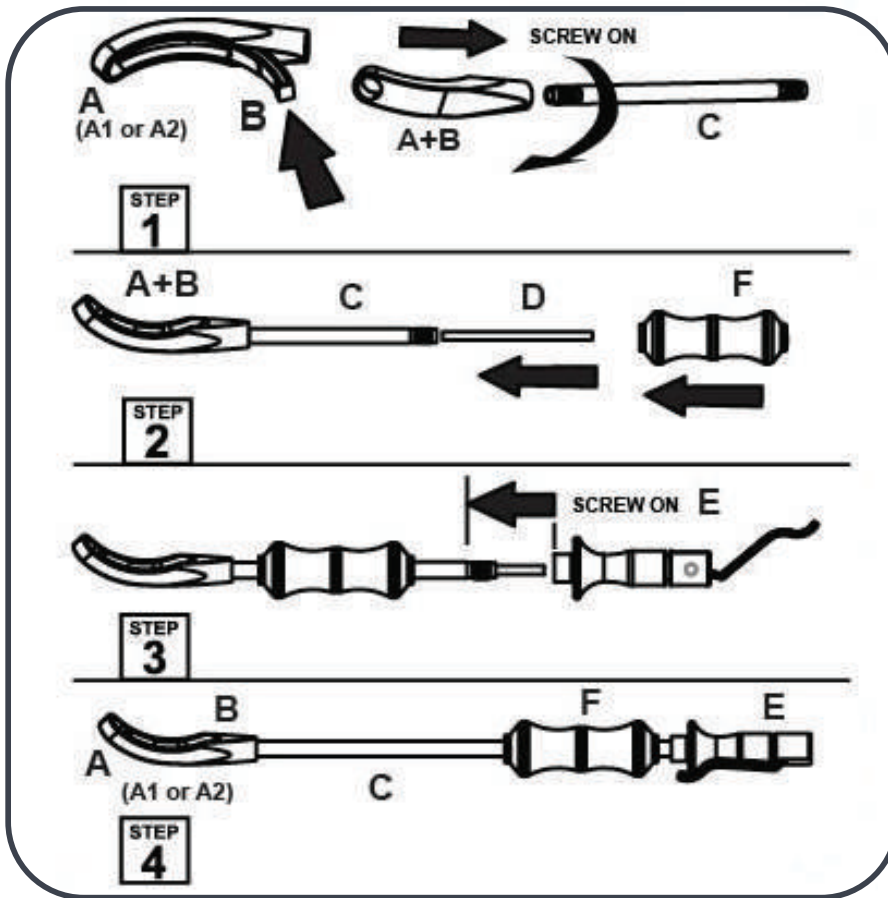


Slap Hammer Assembled



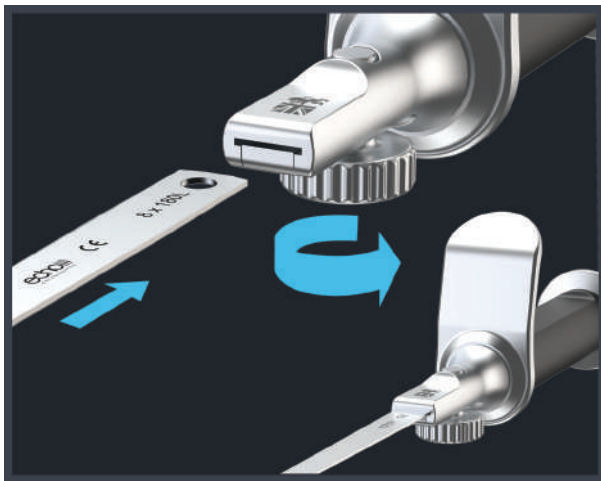
Quick reference User Guide

Slap Hammer Assembly Guide



FEMORAL STEM EXTRACTION SYSTEM QUICK REFERENCE USER GUIDE

Chisel & Handle Assembly Guide



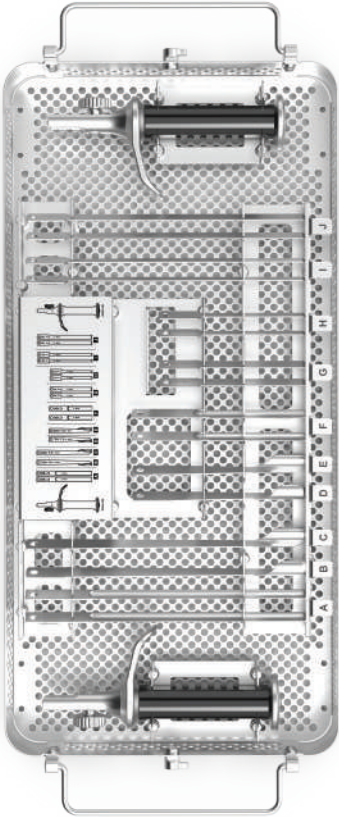
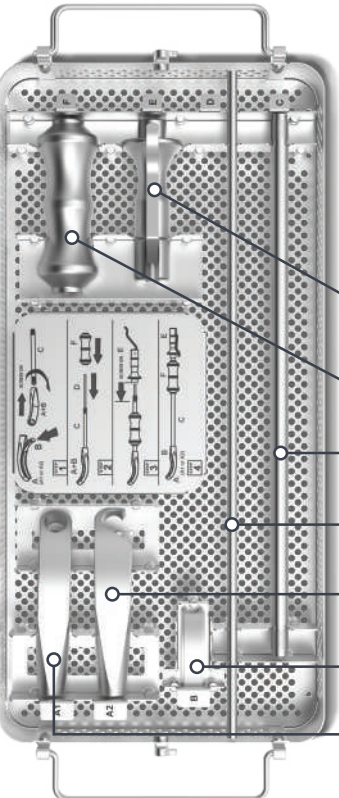
Select Chisel and insert into Handle



Remove Chisel and discard if not fit for further use

For more information on using the Femoral Stem Extraction System please contact Echo Orthopaedics Ltd

Set Contents

Category	Code	Description
	HTG-FC-SYS	Complete System 1 x tray
	HTG-FC-01	Flexible Chisel System Case Base
	HTG-FC-02	Flexible Chisel System Case Lid
	HTG-FC-100	Chisel Handle
	ECO1001	Flex Chisel 6 x 80mm
	ECO1002	Flex Chisel 10 x 80mm
	ECO1003	Flex Chisel 6 x 180mm
	ECO1004	Flex Chisel 10 x 180mm
	ECO1005	Flex Chisel Curved 12 x 100mm
	ECO1006	Flex Chisel Curved 12 x 180mm
	ECO1007	Flex Chisel Medial Cutting Left
	ECO1008	Flex Chisel Medial Cutting Right
	ECO1009	Flex Chisel Medial Cutting Short Right
	ECO1010	Flex Chisel Medial Cutting Short Left
	HTG-SH-SYS	Femoral Stem Extraction Slap Hammer 1 x Tray
	HTG-SH-01	Femoral Stem Extraction Slap Hammer Case Base
	HTG-SH-02	Femoral Stem Extraction Slap Hammer Case Lid
	1001.7.AU.52	EPM Slap Hammer complete (7 parts)
	1001.2.11.2.ST+ (1001.2.12.02.ST)	EPM Handle Clamp
	1001.2.09.N	EPM Weight
	1001.2.17.2L	EPM Outer Sleeve
	1001.2.15.STL	EPM Inner Rod
	1001.5.AU/AU2	EPM Hook
	1001.2.04.U	EPM Trunion Clamp Insert
	1001.6.S/52	EPM Trunion Clamp

Heritage[®] INSTRUMENTS[®]



echo))) ORTHOPAEDICS[®]

Echo Orthopaedics Ltd

Unit 4
Highland Business Park London Road
Bolney
West Sussex
RH17 5PX
United Kingdom

Tel: +44(0) 1444 882210

Please note these "Guidelines for Use" refer to general situations and therefore individual surgeon judgement is required.



93/42/EEC

The medical products to which we assign the CE mark comply with the council Directive 93/42/EEC corresponding to their classification with the perspective conformity valuation process.